



Koch Filter Corporation
Filtration Products Crafted with Pride

The complete line of
Air Filtration Products
for Commercial, Industrial and Hospital Applications



About Our Company

Koch Filter Corporation is a world-class manufacturer of air filtration products. Operated by the Koch family since 1966, Koch Filter Corporation is one of the largest family-owned companies in the air filter industry. Over the past 43-plus years, **Koch** has evolved into a full-line supplier of aftermarket filter products, offering the industry's broadest range of air filters for any existing housing.



◀ Louisville, Kentucky Headquarters

Koch Filter Corporation is headquartered in Louisville, Kentucky where the corporate offices, modern manufacturing plant and extensive warehousing facilities are combined into a 400,000 sq. ft. complex.

Houston, Texas Manufacturing Plant ▶

Our Houston facility serves our customers throughout the southwestern United States and Mexico.



◀ Rancho Cucamonga, California Manufacturing Plant

Our manufacturing facility in southern California (25 miles east of Los Angeles) provides prompt service to our customers in the western United States.

East Greenville, PA Manufacturing Plant ▶

Our East Greenville, PA manufacturing plant (located between Philadelphia and Allentown) serves our customers in the northeastern United States and southeastern Canada.



These manufacturing facilities, combined with our strategically-located sales offices, ensure exceptional service and technical support for our customers anytime, anywhere.

Quality Assurance Program

Koch Filter Corporation maintains an ongoing Quality Assurance Program (QAP) to insure complete customer satisfaction with every filter we ship.

This Program encompasses the entire manufacturing process, beginning with close inspection by experienced personnel of all raw materials as they arrive. Once a component material passes this rigid initial review, a continuing examination process follows each filter through all phases of production, including the final packaging stage. Labels indicating production dates, personnel involved, and other information pertinent to the QAP are attached to most products before they leave the plant.

As the final step in the QAP, finished filters undergo rigorous in-house performance tests. Internal results are regularly verified by independent laboratories in tests conducted according to current ASHRAE Standards. The Quality Assurance Program is a primary reason for **Koch Filter Corporation's** ability to provide the most complete line of high quality air filtration products available.



Distribution Network

Koch Filter Corporation presently supplies high quality air filtration products to customers throughout the U.S. and around the world. To insure the prompt availability of the complete **Koch Filter Corporation** product line, we have developed a large and effective network of trained field representatives and distributors. Supported by our multiple manufacturing sites, this experienced sales team is always ready to offer solutions to any air filtration problem, regardless of the customer's location. Our complete line of high quality products, supported by 43-plus years of filtration manufacturing experience, make **Koch Filter Corporation** the only source you will ever need for replacement air filters.



Technical Services and Filtration Solutions



In addition to our complete range of air filtration products, **Koch** offers a full menu of value-added services. Filtration Training Seminars, Energy Conservation Worksheets, Filter Lifecycle Comparisons, System Surveys and Analysis and a variety of other field services are offered to enhance our value to our distributors and customers around the world.



Applications



◀ Hospital, pharmaceutical, and clean room applications



◀ Industrial plants and gas turbine applications



◀ Airports, museums and other carbon and gas phase filtration applications

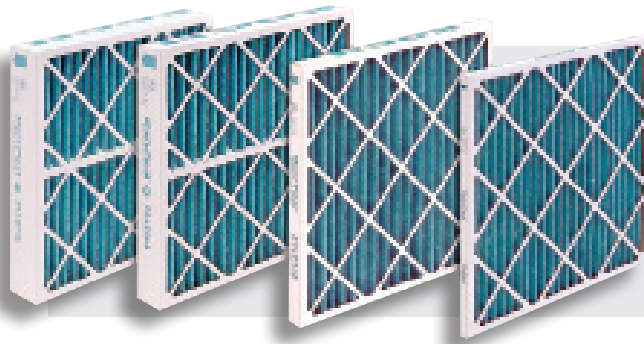
Office buildings, sports arenas, universities and commercial facilities of all types ▶



Paint overspray and industrial finishing applications ▶



A Complete Line of Air Filtration Products



Multi-Pleat 40 and 40HC Pleated Panel Filters

- Extended surface pleated panel filter designed for use in commercial and industrial air filtration systems.
- Standard Capacity and High Capacity media area options.
- High performance dual-component filter media is a blend of natural and synthetic fibers.
- Durable high wet-strength beverage board frame.
- Rust resistant galvanized-dipped expanded metal support grid.
- See page 6 for additional Multi-Pleat models.

ASHRAE Efficiency: 25-30%

MERV Rating: 7

Consult Bulletin No: K-600C

Our most popular pleated filters

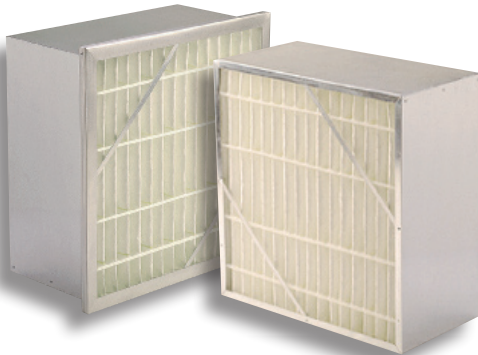
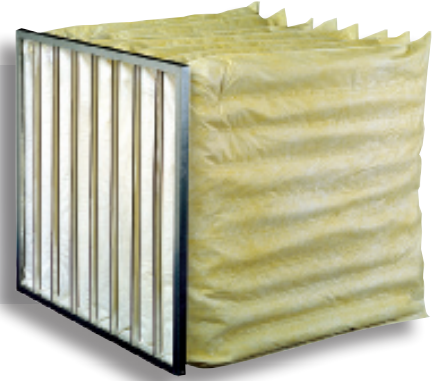
Multi-Sak Extended Surface Pocket Filters

- Versatile pocket filter provides economical high efficiency filtration in commercial and industrial HVAC systems of all types.
- Two media options, Series S synthetic and Series G microfiberglass.
- Exclusive Triple-Lock construction technique for added durability and longevity.
- Unique span-stitch design is sealed with thermoplastic adhesive bead to eliminate air bypass and leakage.
- Standard 13/16" header. 11/8" and other header depths also available.

ASHRAE Efficiencies: 30%, 45%, 65%, 85%, 95%.

MERV Rating: 8-15

Consult Bulletin No: K-288-B



Multi-Flo Rigid Air Filters

- Designed for use in variable-air-volume systems and HVAC applications of all types.
- Sturdy, lightweight galvanized steel cell sides.
- Two media options, Series S synthetic and Series G microfiberglass.
- Single header and No-header styles.

ASHRAE Efficiencies: 45%, 65%, 85%, 95%.

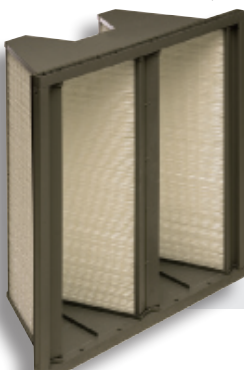
MERV Rating: 10-15

Consult Bulletin No: K-228-C

DuraMAX 4v Minipleat Filters

- 12" deep, extended surface minipleat V-style filter provides unequalled combination of low resistance to airflow, high efficiency, and prolonged filter life.
- Available with Microfiberglass or Synthetic filter media.
- 194 ft² of media in a 24x24x12 frame.
- Rugged, lightweight plastic frame is 100% incinerable.
- Several standard sizes available.

ASHRAE Efficiencies: 65%, 75%, 85%, 95%, 98% • MERV Rating: 11-16 • Consult Bulletin No: K-996B



DuraMAX 2v Minipleat Filters

- Minipleat 2v design packs 110 ft² of media in a 24x24x12 frame.
- Available with Microfiberglass or Synthetic filter media.
- Ideal replacement for other high efficiency rigid filters.
- Rugged, lightweight plastic frame is 100% incinerable.
- Several standard sizes available.

ASHRAE Efficiencies: 65%, 75%, 85%, 95%, 98% MERV Rating: 11-16

Consult Bulletin No: K-1205B



Multi-Cell Rigid Air Filters

- Designed for use in variable-air-volume systems and HVAC applications of all types.
- Microfiberglass media with Double-Edge™ corrugated aluminum separators.
- Available in economy model LC Rigid with reduced media area.
- Metal or wood cell sides. Other specialized cell sides available.
- Single Header, Double Header, and No-Header styles.
- Please see Multi-Cell HT for high temperature applications, page 9.

ASHRAE Efficiencies: 65%, 85%, 95%.
MERV Rating: 11-15
Consult Bulletin No: K-787B

MicroMAX Minipleat Filters

- 4" deep extended surface air filters which utilize revolutionary minipleat technology to achieve high efficiencies and low pressure drop.
- Compact, space-saving 4" depth (125 ft² media in a 24x24x4 filter).
- Moisture-resistant beverage board frame or galvanized frame.
- No-Header and Single Header styles.

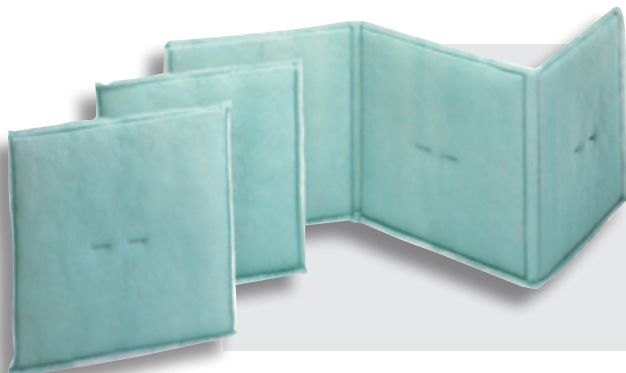
ASHRAE Efficiencies: 65%, 85%, 95%
MERV Rating: 11-15
Consult Bulletin No: K-195-B



Maxi-Grid Internally Supported Panel Filters

- Internally supported polyester panel filters designed for general HVAC, paint spray booths, and fan coil units.
- 6 styles available: MG200 3 Ply, MG400 4 Ply, MG550 3 Ply, MG500 Diffusion Panel, MG600 Diffusion Panel.
- Self-sealing design eliminates air bypass, no clips required.
- Available in single panels and link panels.
- Excellent for rooftops and other high moisture applications.
- Slip on Sleeve style also available.

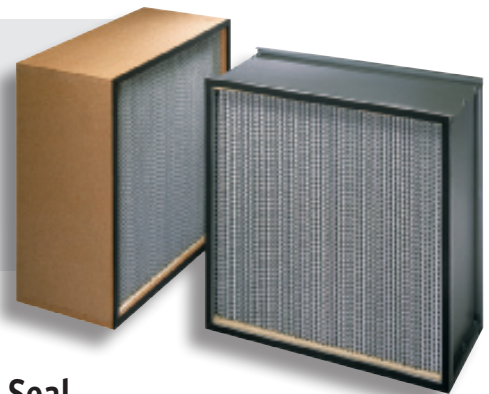
ASHRAE Efficiencies: 20%-60%. * **MERV Rating:** 7-11
Consult Bulletin Nos. K-902, PB-798-3, K-892, K-892-1, K-892-2, K-892-3, K-892-5, K-892-6.



BioMAX HEPA Filters

- BioMAX HEPA filters provide the contaminant-free air required in many industrial, medical, and pharmaceutical applications.
- Microfiberglass media with Double-Edge™ corrugated aluminum separators.
- Metal or wood cell sides.
- Standard Capacity (1100 CFM) or High Capacity (2000 CFM).
- All BioMAX HEPA Filters are scan tested for leaks prior to shipment.

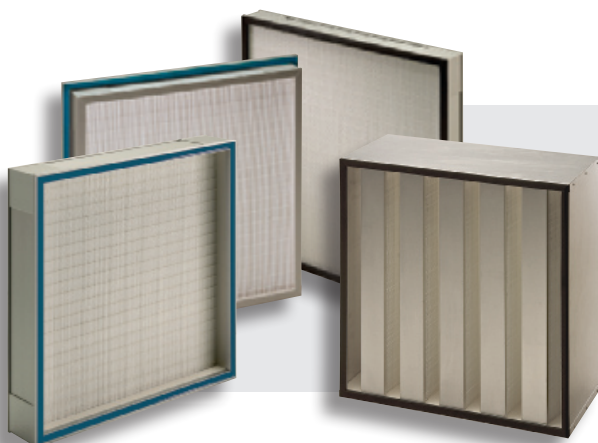
Efficiency Range: 95%-99.999% @ .3 micron particles • **Consult Bulletin:** K-603A



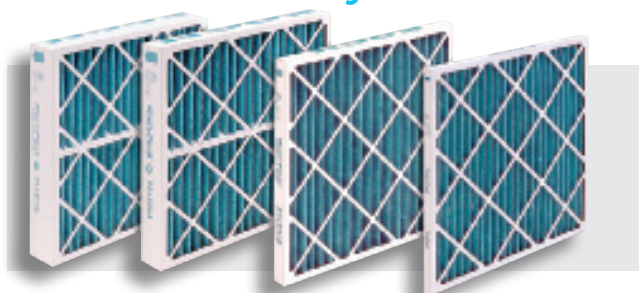
BioMAX CS Gel Seal Minipleat HEPA Filters

- Compact Series BioMAX CS HEPA filters are designed for use in ceiling diffusers, ducted modules, hospitals and other critical clean room applications.
- Microfiberglass media with thermo-plastic glue-bead minipleat separators.
- Anodized extruded aluminum cell sides. Wide range of standard and custom sizes.
- Gasket seal, gel seal, and knife-edge styles available.
- BioMAX-V2000 for high capacity 2000 CFM applications.
- All BioMAX HEPA Filters are scan tested for leaks prior to shipment.

Efficiency Range: 95%-99.999% @ .3 micron particles
Consult Bulletin: K-603-B



Extended Surface Pleated Panel Filters



Our most popular pleated filters.

Multi-Pleat 40 and 40HC

- Extended surface pleated panel filter designed for use in commercial and industrial air filtration systems.
- Standard Capacity and High Capacity media area options.
- High performance dual-component filter media is a blend of natural and synthetic fibers.
- Durable high wet-strength beverage board frame.
- Rust resistant galvanized-dipped expanded metal support grid.
- Available in a wide range of standard and custom sizes.

ASHRAE Efficiencies: 25–30%

MERV Rating: 7

Consult Bulletin No: K-600C



Multi-Pleat XL8 and XL11

- MERV 8 (XL8) and MERV 11 (XL11) extended surface pleated panel filters for use in commercial and industrial air filtration systems where a higher degree of clean air is desired.
- Standard Capacity and High Capacity media area options.
- High performance synthetic filter media.
- Durable high wet-strength beverage board frame.
- Rust resistant galvanized-dipped expanded metal support grid.
- Available in a wide range of standard and custom sizes.

ASHRAE Efficiencies: 30% and 60%

MERV Ratings: 8 and 11

Consult Bulletin Nos: K-100B, K-602

Multi-Pleat Green 13

- MERV 13 efficiency rating meets the criteria of the US Green Building Council's LEED Green Building Rating System.
- High efficiency extended surface pleated filter designed for use in commercial and industrial air filtration systems where higher efficiencies are desired.
- High performance synthetic media.
- Low resistance to airflow compared to competitive models.
- Durable high wet-strength beverage board frame.
- Rust resistant galvanized-dipped expanded metal support grid.
- Available in wide range of standard and custom sizes.

ASHRAE Efficiency: 80–85%

MERV Rating: 13

Consult Bulletin No: K-608



Multi-Pleat Series K40

- Economy pleated panel is constructed with slightly reduced media area to achieve a value-oriented combination of performance and low initial cost.
- High performance dual-component filter media is a blend of natural and synthetic fibers.
- Durable high wet-strength beverage board frame.
- Rust resistant galvanized-dipped expanded metal support grid.
- Available in a wide range of standard sizes, 2" and 4" thicknesses.

ASHRAE Efficiencies: 25–30%

MERV Rating: 7

Consult Bulletin No: K-1094

Multi-Pleat SA Pleated Panel Filters with Built-in Header

- 4" deep pleated panel constructed with a 13/16" peripheral header for easy installation into side access housings.
- High performance dual-component filter media is a blend of natural and synthetic fibers.
- Durable high wet-strength beverage board frame.
- Rust resistant galvanized-dipped expanded metal support grid.
- Available in three standard sizes.

ASHRAE Efficiency: 25–30%

MERV Rating: 7

Consult Bulletin No: PB-1293

Multi-Pleat Series AB, HW and SG Pleated Panel Filters for Residential Air Cleaners

- Koch offers a complete line of MERV 8 and MERV 11 replacement filters for commercial and residential air cleaners such as *Airbear*®, *Honeywell*®, *SpaceGard*® and other major brands.
- High performance synthetic filter media.
- Durable high wet-strength beverage board frame.
- Rust resistant galvanized-dipped expanded metal support grid.

ASHRAE Efficiencies: 30% and 60%

MERV Ratings: 8, 11, 13

Consult Bulletin No: K-104

Multi-Pleat HT High Temperature Pleated Panel Filters

- Designed for use in high temperature baking ovens found in many painting processes.
- Aluminized frame will not chip or flake.
- Ultrafine microfiberglass media.
- Rust resistant expanded aluminum support grid.
- Available in a wide range of standard and custom sizes.
- UL Class 1.

ASHRAE Efficiency: 35–40%

MERV Rating: 8

Consult Bulletin No: PB-594

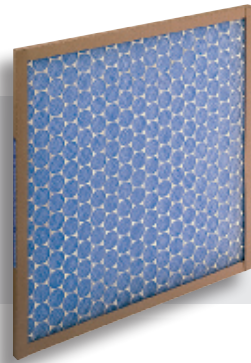
Disposable Filters, Automatic Rolls, Bulk Filter Media and Washable Filters



Automatic Roll Filters

- Replacement Roll Filters for all existing roll filter equipment: *American Air Filter Roll-O-Matic**, *Continental Conomatic and Conomannual**, *Farr Roll Kleen**, *Cambridge Electro-Aire**, and all other major automatic roll filter and unit ventilator equipment.
- Five media choices: Two grades of glass fiber media and three grades of synthetic media.
- All medias consist of progressively dense fibers supported by an integral scrim backing.

ASHRAE Efficiency: 20–30%
MERV Rating: 4–7
Consult Bulletin No: K-11586



Commercial/Industrial C&I Disposable Filters

- Economical panel filter for any HVAC application.
- Rugged, moisture resistant frame.
- Graded density media pad. Synthetic or Fiberglass media options.
- Metal support grille.
- Available in 1" and 2" depths.
- All popular standard sizes and custom sizes.

ASHRAE Efficiency: <20%
MERV Rating: 5
Consult Bulletin No: K-888-B



Synthetic and Fiberglass Bulk Filter Media and Pads

- A wide range of synthetic and fiberglass medias for commercial and industrial applications.
- Synthetic media is available in 1/2", 1", and 2" media depths.
- Fiberglass media is available in 1/2", 1", 2" and 4" media depths.
- All types are offered in pre-cut pads or bulk rolls.

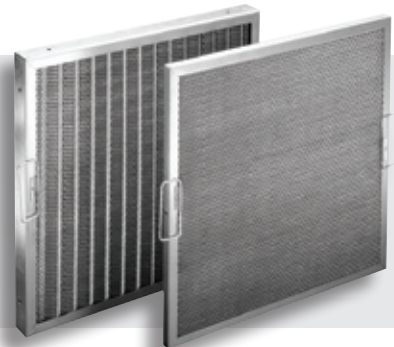
ASHRAE Efficiencies: 20–30%
MERV Ratings: 4–8
Consult Bulletin Nos: PB-001-B, K-386D



Koch Pad Holding Frames

- The **Koch** Pad and Frame System offers an easy and cost-effective method of achieving proper air filtration.
- Easy-open gate allows for quick filter changes.
- Galvanized steel construction.
- Available in all popular standard sizes and also in custom sizes.
- Use with any Koch Synthetic or Fiberglass Filter Media pad.

Consult Bulletin No. K-980A

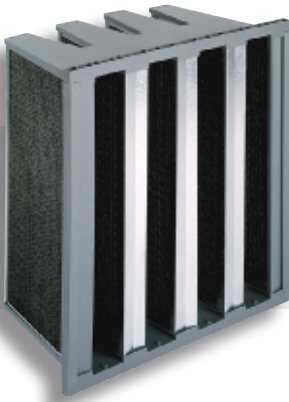


Type MA Permanent Washable Filters

- Type MA Aluminum Filters are constructed with rugged components designed to offer excellent filtration performance in HVAC systems, grease hoods, or any applications where a permanent, cleanable filter is required.
- Available in a wide variety of standard and custom-made sizes.
- Spray adhesive is offered to further enhance dust holding properties.

ASHRAE Efficiency: <20%
MERV Rating: <6
Consult Bulletin No: K-985-A

Carbon and Gas Phase Filtration



DuraPURE V-Style Gas Phase Filter

- Industrial grade extended surface gas phase adsorption filter for removal of volatile organic compounds, chemical contaminants, and odors.
- Standard Capacity and High Capacity options.
- Available with premium grade activated carbon, impregnated carbon, or potassium permanganate.
- DustNet "afterfilter" prevents carbon dust downstream.
- Three standard sizes available.

Consult Bulletin No. K-397



OdorKleen ES Pleated Panel Filter

- Light duty carbon filter for removal of odors in commercial or light industrial applications.
- Carbon impregnated filter media.
- Durable high wet-strength beverage board frame.
- Rust resistant galvanized-dipped expanded metal support grid.
- Available in a wide range of standard sizes.

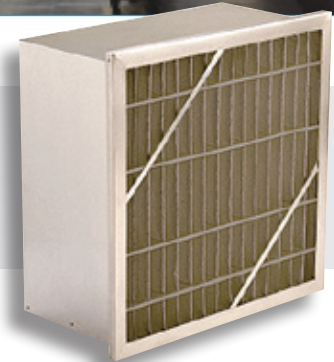
ASHRAE Efficiencies: 25-30%
MERV Rating: 7
Consult Bulletin No: K-693A



OdorKleen 250 High Efficiency Carbon/Particulate Filter

- Uses CelBond™ Particulate Structures (CPS) Technology.
- MERV 8 efficiency and excellent adsorption capability.
- Low resistance to airflow.
- Virtually no dusting.

ASHRAE Efficiency: 30%
MERV Rating: 8
Consult Bulletin No. PB-1201



DuraKleen High Efficiency Gas Phase Filter

- Industrial grade extended surface gas phase adsorption filter for removal of volatile organic compounds, chemical contaminants, and odors.
- Uses CelBond™ Particulate Structures (CPS) Technology.
- Three standard sizes available.
- Low resistance to airflow.
- Virtually no dusting.

Consult Bulletin No. PB-1202



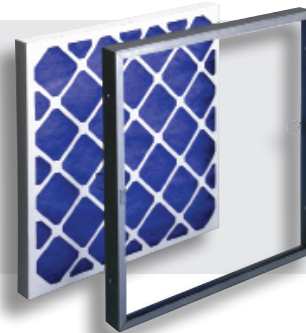
▲ Side Access Housings

Carbon and Gas Phase Filter Housings

Air Filter Housings

- Versatile line of Air Filter Housings designed for easy installation into original equipment and retrofit filtration systems.
- Standard housings are constructed of 16 gauge steel and can be manufactured to meet specifications in ASHRAE or HEPA applications.
- A wide variety of optional features and housing depths.

Consult Bulletin No. K-298



Type AR Filter Holding Frames

- Designed for simple and cost-effective construction of filter banks.
- 16 gauge galvanized steel components.
- Each frame is equipped with gaskets to provide protection against air bypass.
- Pre-punched holes in the sides of the frame make filter bank construction easy and trouble-free.
- Wide selection of clips and latches.

Consult Bulletin No. K-186D

Specialty Media and Accessories



Koch Filter Corporation offers many air filtration accessories and medias for specialized applications:

- Magnehelic gauges.
- Foam media for room air conditioners.
- Replacement filters for unit ventilation equipment.
- Medias for ink and lint control.
- Textile media for food processing and tobacco applications.
- *All available from Koch, the complete source for air filtration products.*

Filters for Paint Overspray and Industrial Finishing Applications



SprayStop Paint Arrestors

- Wide range of media types and styles to provide the best solution for overspray collection in every application.
- All medias available in bulk rolls, pads, or pre-cut blankets

SprayStop S Standard Capacity

Polyester media, PB-798-1

SprayStop SHC High Capacity

Polyester media, PB-798-2

SprayStop Expanded Paper

(six types available) PB-693-3, 4, 5, 6, 7

SprayStop Fiberglass

(two types available) PB-693-1

Other popular types of Paint Arrestors are available

MERV Rating: 5-10

Consult Bulletin K-798B

SprayClean Air Make-up and Paint Booth Intake Filters

- Available in depth-loading and extended surface designs to meet the critical requirements for every coating operation.
- **Maxi-Grid** Internally Supported Panels and Link Panels K-902, K-798-4
- **Duo-Cube** K-111C
- **DuraMAX** K-996B
- **Duo-Pak** PB-798-6
- **Multi-Sak** K-288B
- **KDF600** PB-798-3

MERV Rating: 5-15

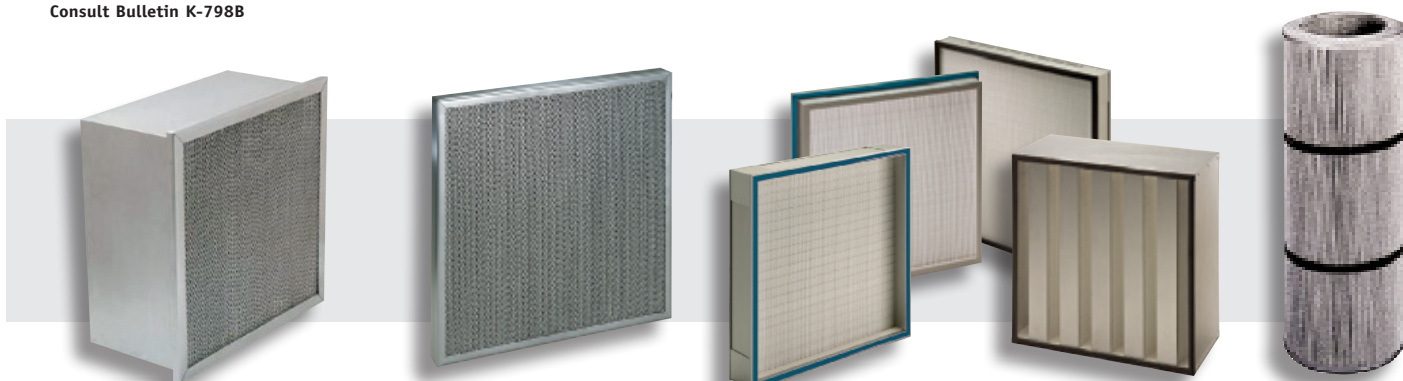
Consult Bulletin K-798B

SprayStop Multi-Stage Systems

- EPA 319-approved technologies for the source capture of chromate-laden coatings used in the aerospace industry.
- **SprayStop System 2** (two stage) PB-798-11
- **SprayStop System 3** (three stage) PB-798-7
- **SprayStop System 2XE** (two stage) PB-798-18
- Available in all sizes and configurations, these products provide optimum filter life and value.

MERV Rating: 10-15

Consult Bulletin K-798B



Multi-Cell HT High Temperature Rigid Air Filters

- High efficiency, extended surface air filter designed for use in applications with temperatures ranging from 350° to 900°.
- Microfiberglass media with Double-Edge™ corrugated aluminum separators.
- Aluminized steel cell sides with aluminized steel faceguards on air entry and air exit sides are ideal for use in paint ovens where high temperatures may cause galvanized steel to scale or flake.
- Single header or Double header configurations.
- Available in all popular sizes.

ASHRAE Efficiencies: 65% and 95%

UL Class 1

MERV Rating: 11-15

Consult Bulletin No: K-708A

Multi-Cell CS Compact Size High Temperature Rigid Air Filters

- Compact 2" or 4" high efficiency, extended surface air filter designed for use in applications with temperatures ranging from 350° to 725°.
- Microfiberglass media with Double-Edge™ corrugated aluminum separators.
- Aluminized steel cell sides with aluminized steel faceguards on air entry and air exit sides are ideal for use in paint ovens where high temperatures may cause galvanized steel to scale or flake.
- Available in all popular sizes.

ASHRAE Efficiencies: 65% and 95%. • UL Class 1

MERV Rating: 11-15 • Consult Bulletin No: K-304

BioMAX CS Gel Seal Minipleat HEPA Filters

- Compact Series BioMAX CS HEPA filters are designed for use in industrial Powder Coat installations.
- Microfiberglass media with thermoplastic glue-bead minipleat separators.
- Anodized extruded aluminum cell sides. Wide range of standard and custom sizes.
- Gasket seal, gel seal, and knife-edge styles available.
- BioMAX-V2000 for high capacity 2000 CFM applications.

Efficiency Range: 95%-99.999%

@ .3 micron particles

Consult Bulletin: K-603-B

Cylindrical Dust Collection Cartridges

- Available in a wide range of medias and sizes.
- For powder coating, bead blasting, and pollution control applications.
- Ensure maximum performance and value in source capture and reclaim capability.

Consult Bulletin

No. PB-798-20

Medium and High Efficiency Extended Surface Filters



Standard Duo-Cube Filters

- Standard Duo-Cube fits existing basket-type framework.
- Excellent for high moisture environments.
- Medium efficiency, synthetic cube filter provides excellent dust holding capacities.

ASHRAE Efficiency: <20%
MERV Rating: 5-6
Consult Bulletin No. K-111C

2 Ply Duo-Cube Filters

- Excellent for high moisture environments.
- Medium efficiency, self supporting synthetic cube filter provides excellent dust holding capacities.
- Antimicrobial-treated filter media.
- Self-Seal Duo-Cube has internal wire frame around perimeter and seals tightly into holding frame without the use of clips.

ASHRAE Efficiency: 20-30%
MERV Rating: 6-8
Consult Bulletin No. K-111C

3 Ply Duo-Cube Filters

- 3 Ply Duo-Cube provides the highest performance characteristics of any selection from the Duo-Cube series. Each filter has internal wire frame around perimeter and seals tightly into holding frame without the use of clips.
- Excellent for high moisture environments.
- Antimicrobial-treated filter media.
- Medium efficiency, self supporting synthetic cube filter provides excellent dust holding capacities.

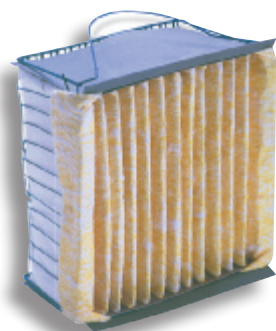
ASHRAE Efficiency: 25-35%
MERV Rating: 8
Consult Bulletin No. K-111C

Duo-Pak 40 Synthetic Pocket Filters

- Excellent for high moisture environments.
- Medium efficiency, self supporting synthetic pocket filter provides excellent dust holding capacities.
- Antimicrobial-treated filter media.
- Duo-Pak 40 has internal wire frame around perimeter and seals tightly into frame without the use of clips.

ASHRAE Efficiency: 20-30%
MERV Rating: 6-8
Consult Bulletin No: PB-798-6

Original Equipment Replacement Cartridges



Koch offers a series of replacement filter cartridges designed to fit the existing original equipment baskets and framework of four "first generation" filter housings.

Multi-Test Cartridge (pictured above)

- For Camfil HP* systems.
Consult Bulletin No. K-1187.

Multi-Test Rigid

- For Cambridge Rigid Aerosolve* systems.
Consult Bulletin No. K-1080-A.

Multi-45 Cartridge

- For Continental Air Filter Cono 45 and Cono Flo* systems.
Consult Bulletin No. K-1287-A.

Duo-Cap Cartridge

- For Cambridge Hi Cap* systems.
Consult Bulletin No. K-240.

MicroSafe Antimicrobial-Treated Filters



- A complete range of pleated filters, panel filters, pocket filters and rigid filters treated with a proven antimicrobial.
- MicroSafe antimicrobial-treated filters help control harmful mold, mildew, and bacteria in the air handling system.

Consult Bulletin No. K-994



Filters for Gas Turbines and Rotating Equipment



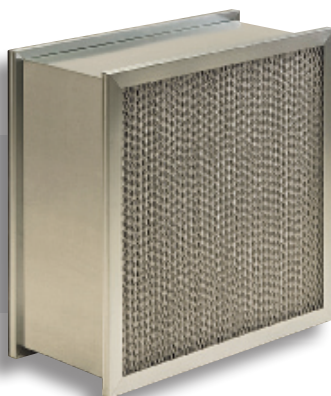
DuraMAX 4v High Efficiency Minipleat Filters

- 12" deep extended surface minipleat V-style filter provides unequalled combination of low resistance to airflow, high efficiency, and prolonged filter life.
- Available in Microfiberglass or Synthetic filter media.
- Standard model is constructed with all plastic frame, no metal components, no rivets. 100% incinerable.
- Also available with expanded metal protective faceguards upon request.
- Combine the DuraMAX 4v with DuraGlove Prefilter in reverse-mount installations.
- Several standard sizes available.

ASHRAE Efficiencies: 65%, 75%, 85%, 95%, 98%

MERV Rating: 11-16

Consult Bulletin No: K-996B



Maxi-Cell Gas Turbine Inlet Filters

- Extended surface, high efficiency barrier filter designed for maximum performance in the most extreme atmospheric conditions.
- Dual-layered microfiberglass media with Double-Edge™ corrugated aluminum separators. (Available with coated separators for highly corrosive environments).
- Galvanized steel cell sides with expanded metal faceguards on air entry and air exit sides.
- Single header or Double header configurations.

ASHRAE Efficiencies: 65% and 95%.

MERV Rating: 11-14

Consult Bulletin No: K-386-B



Multi-Pleat GT Pleated Panel Filter

- Extended surface pleated panel designed for use as a prefilter in gas turbines, centrifugal compressor air intakes, and other high velocity systems.
- Integral pleat supports.
- High performance synthetic filter media.
- Media is supported by a rust resistant metal grid.
- Available in a wide range of standard and custom sizes.

ASHRAE Efficiencies: 30-35%

MERV Rating: 8

Consult Bulletin No: K-906A



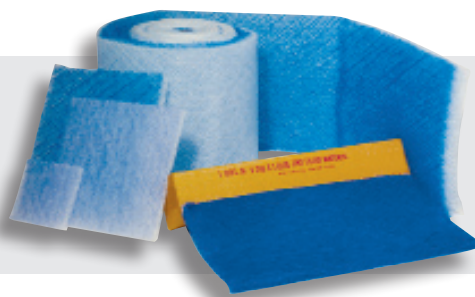
Multi-Pleat GT-HD Heavy Duty Pleated Panel Filter

- Ultra heavy-duty frame is moisture resistant and is designed for high humidity applications.
- Specialized high loft synthetic media is moisture resistant.
- Replacement for prefilters provided in OEM inlet air housings.
- Media is supported by a specialized heavy-duty rust resistant galvanized-dipped expanded metal grid.

ASHRAE Efficiencies: 25-30%

MERV Rating: 7-8

Consult Bulletin No: K-906C



Synthetic and Fiberglass Bulk Rolls and Pads

- A wide range of synthetic and fiberglass medias for use as a prefilter in gas turbines, centrifugal compressor air intakes, and other high velocity systems.
- Synthetic media is available in 1" and 2" depths.
- Fiberglass media is available in 2" and 4" depths.
- All types are offered in pre-cut pads or bulk rolls.

ASHRAE Efficiencies: 20-30%

MERV Ratings: 4-8

Consult Bulletin Nos: PB-001-B, K-386D



Cylindrical Cartridge Filters for Gas Turbine Air Intakes

- Pleated media cartridges perform in self-cleaning pulse systems or standard non-pulsing systems.
- Expanded metal retainer screens inside and outside.
- Multiple media options.

Consult Bulletin No: K-906A



Koch Filter Corporation

Filtration Products Crafted with Pride

Corporate Offices

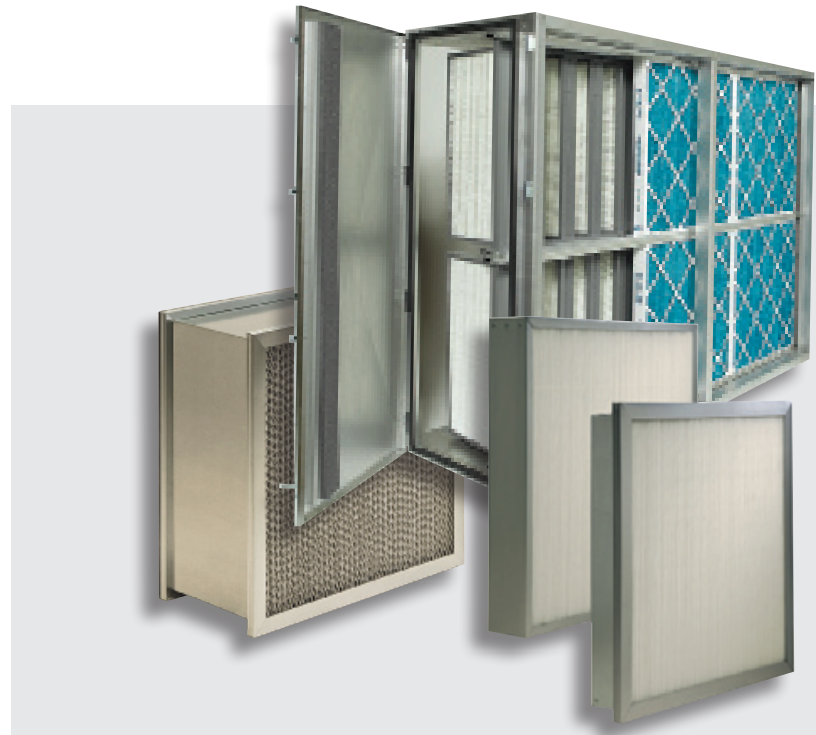
Post Office Box 3186
625 West Hill Street (40208)
Louisville, KY 40201
Phone: 502.634.4796
Fax: 502.637.2280
E mail: info@kochfilter.com
Website: www.kochfilter.com

Manufacturing Sites, Sales Offices, and Distribution Centers

Louisville, KY ** (Headquarters)
Atlanta, GA
Cincinnati, OH
East Greenville, PA **
Detroit, MI
Houston, TX **
Indianapolis, IN
Kansas City, MO
Madbury, NH
Nashville, TN
Rancho Cucamonga, CA **

*** Denotes manufacturing site.*

Distributed by



© 2009 KOCH FILTER CORPORATION

** Competitive brand names and trade names used throughout this brochure are used for identification purposes only. No other use is intended.*